

# 3D Model Solutions for the Energy Sector

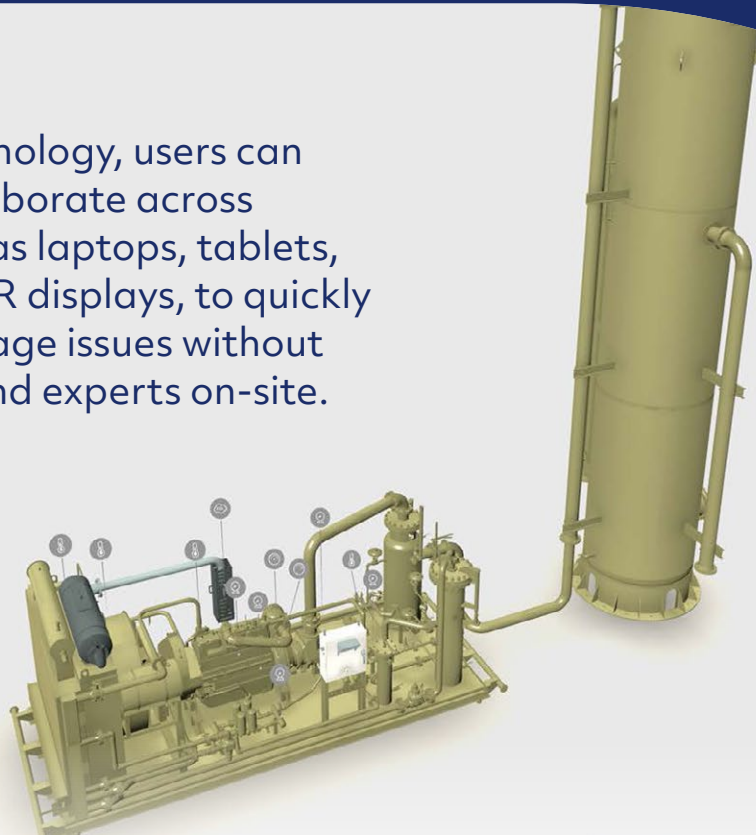
Reduce Downtime and Simplify Maintenance Logistics



# Reduce downtime and simplify maintenance logistics with photo-realistic 3D models that collect and visualize real-time data from your assets.

Oil — Gas — Solar — Wind — Mining — Utilities

With our technology, users can remotely collaborate across devices, such as laptops, tablets, and rugged AR displays, to quickly assess and triage issues without needing to send experts on-site.



# Key Features & Benefits

- ✓ Intuitive user interface with no training required
- ✓ Locate equipment problems and diagnose issues immediately with advanced visualizations
- ✓ Reduce travel costs and downtime through remote collaboration
- ✓ Track the status and locations of workers to improve safety
- ✓ Create videos for safety training and regulatory reports
- ✓ Use AR for sales, marketing, and training to enrich customer and field staff experiences

**Receive alerts and quickly coordinate a response when accidents occur.** Safety violations are a significant financial risk for companies within the energy industry. Sensor data and 3D modeling not only reduce insurance costs, but help organizations identify the causes of accidents.



## Employee Tracking

Track individual worker location on a 3D model.



## Employee Safety

Protect workers with real-time emissions safety alerts.



## Geofencing

Geofence hazardous areas in 3D.



## Collaboration

Collaborate onsite / offsite using 3D models, AR, and live video.



## Wearable Tech

Compatible with the latest technology in wearables.

**Talk to our 3D Models  
Solution Specialist.**

**☎ 1800 100 227**

**constellation**   
technologies

Level 7, 420 Collins Street  
Melbourne Victoria 3000 Australia

Tel 1800 100 227  
Email [sales@ct1limited.com](mailto:sales@ct1limited.com)

[constellationtechnologies.com.au](http://constellationtechnologies.com.au)